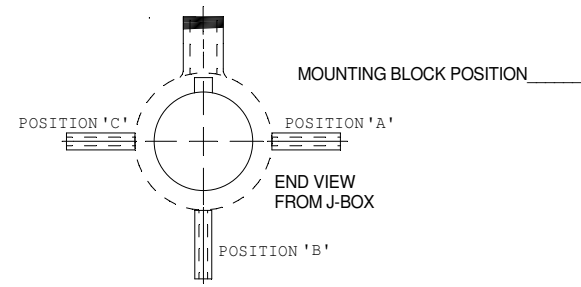
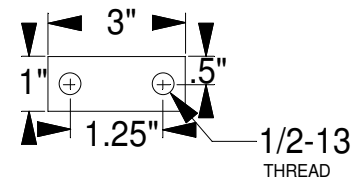
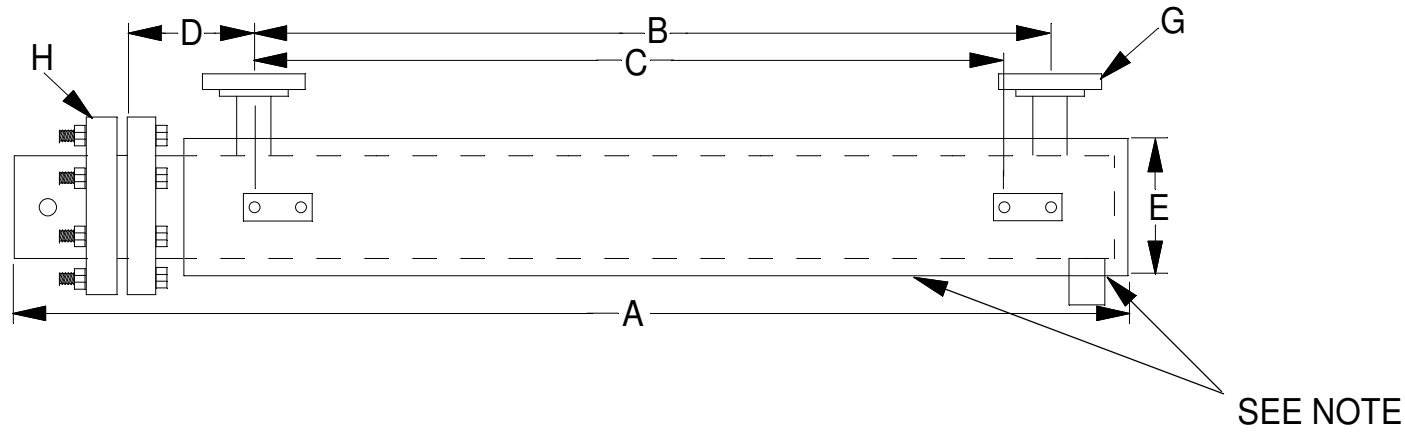


A \_\_\_\_\_  
 B \_\_\_\_\_  
 C \_\_\_\_\_  
 D \_\_\_\_\_  
 E \_\_\_\_\_  
 F \_\_\_\_\_  
 G \_\_\_\_\_  
 H \_\_\_\_\_



**FIGURE 2 : FLANGED CONNECTIONS**



NOTE: 1/2" NPT DRAIN PLUG OPTIONAL  
 ALL CIRCULATION HEATER VESSELS  
 COVERED WITH A GALVANIZED STEEL  
 SHELL UNLESS OTHERWISE SPECIFIED

DIMENSIONS ARE IN INCHES (MM)  
 TOLERANCES ARE AS FOLLOWS, UNLESS NOTED  
 1/XX<sub>+</sub> + 1/8" (3mm)    1/XX<sub>+</sub> + 1/16" (1mm)  
 .0X<sub>+</sub> + .01" (.25mm)    .00X<sub>+</sub> + .005" (.1mm)  
 ANGLES ± 1°  
 NOTES:

REVISION DATE	REV. NUMBER	DESCRIPTION OF REVISION	REV'D BY	APP'D BY

**Glo-Quartz® Incorporated**  
 Industrial Electric Heaters & Controls since 1952  
 1550 South Euclid Avenue  
 Tucson, Arizona 85713  
This document is the property of Glo-Quartz Incorporated  
 It is provided for customer use only, and is not to be  
 disclosed to other sources for any reason without express  
 written approval from Glo-Quartz. Possession does NOT  
 constitute approval.

TITLE: <b>FLANGED HEATER, FLANGED FITTINGS</b>		
CUSTOMER:		
DESIGN BY:	DESIGN DATE:	
DRAWN BY:	DRAWN DATE:	
CHECKED BY:	CHECK DATE:	
RELEASED FOR:	SCALE:	SHEET No.:
DRAWING NUMBER:	REV.:	